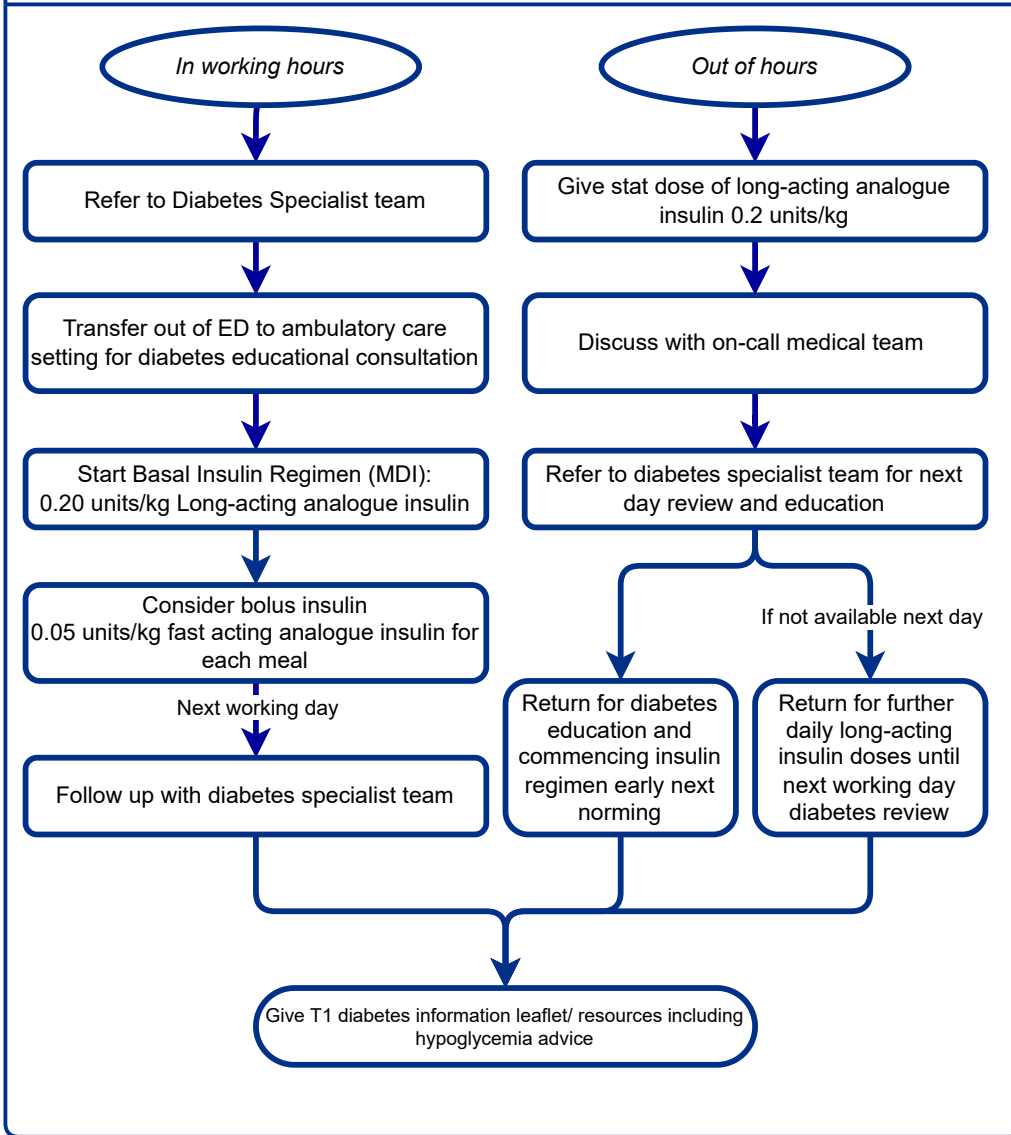


This tool is to support discharge for patients with new diabetes. For patients with pre-existing diabetes, see supporting document here.

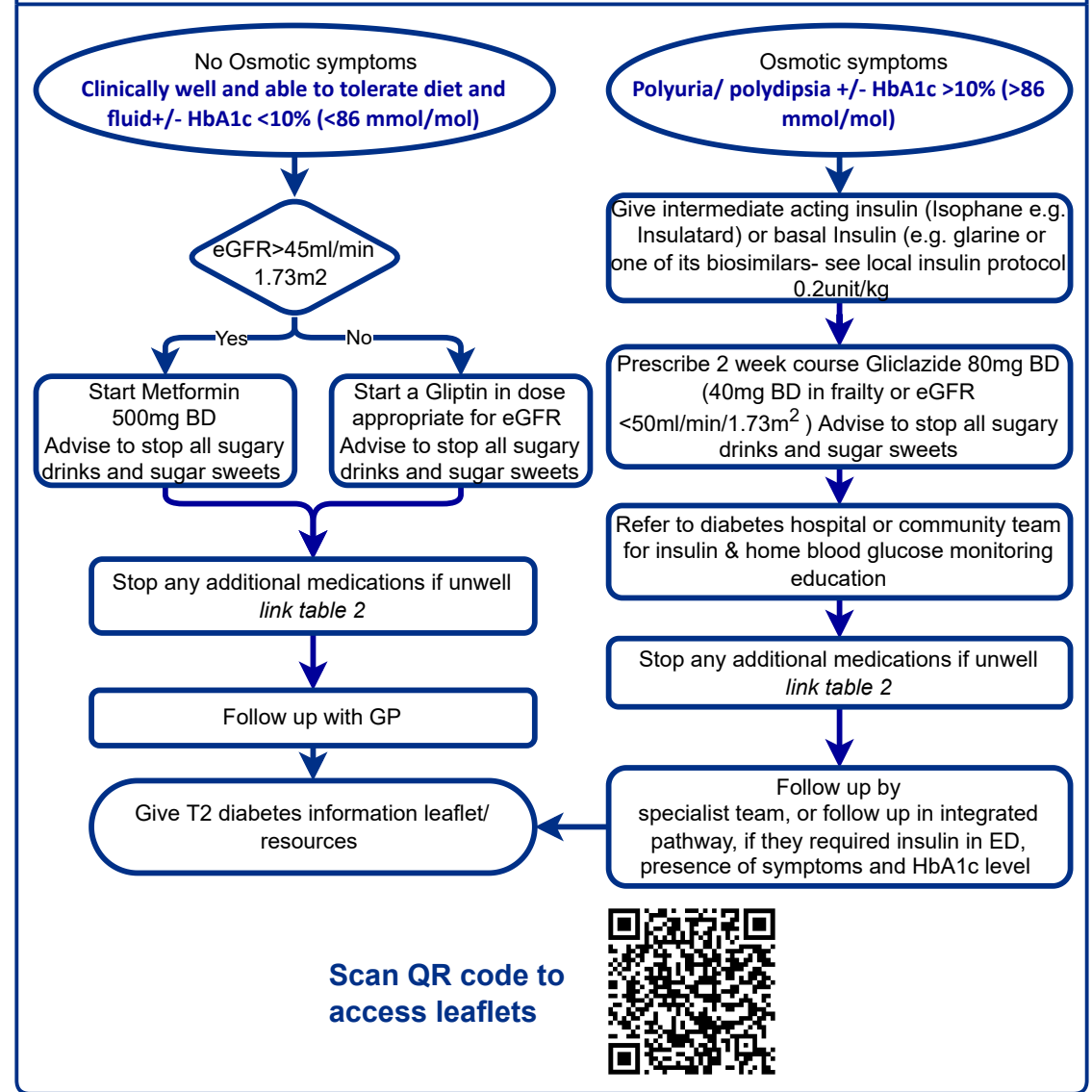
Review by senior A&E (SpR/ Consultant) to confirm discharge plan

Link to diabetes type 1 or type 2 info

Treatment for likely new Type 1 Diabetes



Treatment for likely new Type 2 Diabetes



Scan QR code to access leaflets

