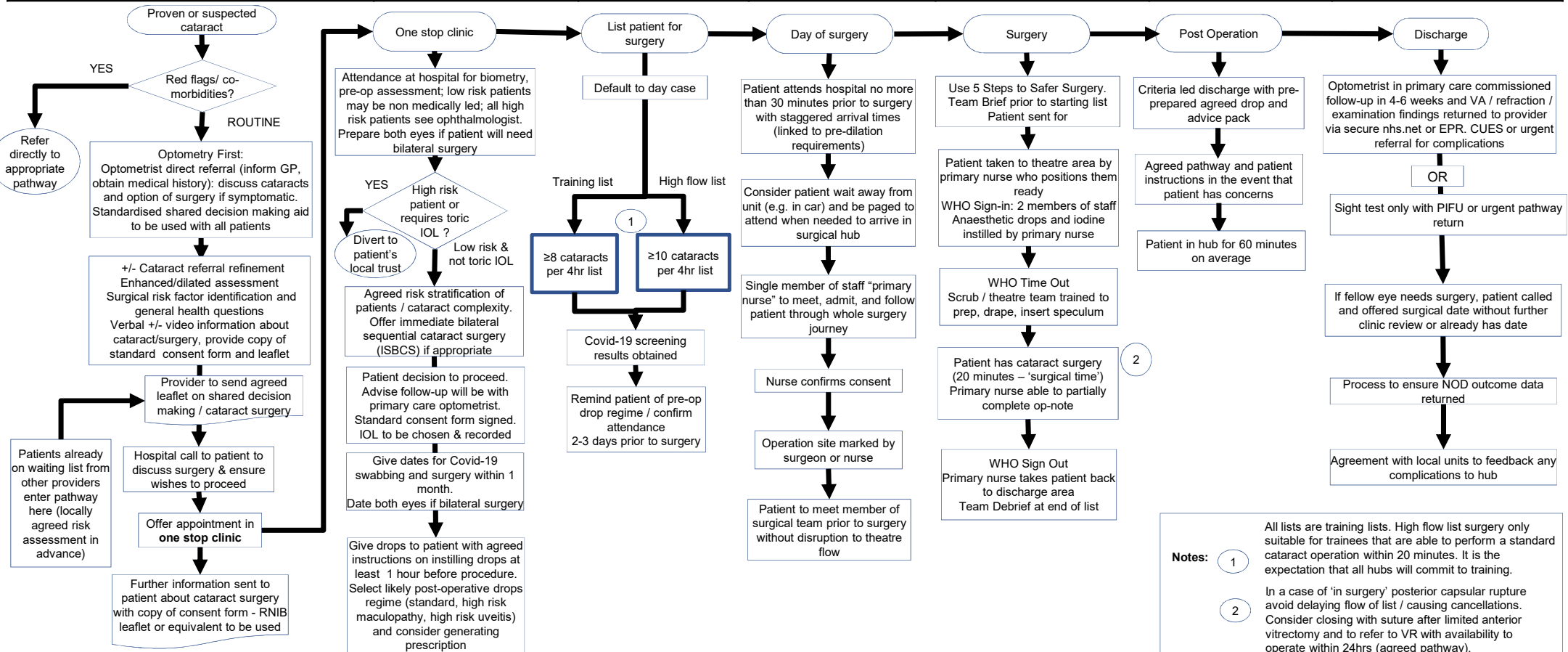


Ophthalmology/ Eye Care: High Volume / Low Complexity (HVLC) Cataract Pathway



| High Volume / Low Complexity (HVLC) Cataract Pathway | | | | | | |
|--|---------------------------------------|------------------|-----------|---------|----------------|-----------------------|
| Prehospital | Hospital | | | | Post Hospital | |
| Referral | Patient selection & Pre-op assessment | Booking/ listing | Admission | Surgery | Post Operative | Discharge & follow-up |



Notes:

1 All lists are training lists. High flow list surgery only suitable for trainees that are able to perform a standard cataract operation within 20 minutes. It is the expectation that all hubs will commit to training.

2 In a case of 'in surgery' posterior capsular rupture avoid delaying flow of list / causing cancellations. Consider closing with suture after limited anterior vitrectomy and to refer to VR with availability to operate within 24hrs (agreed pathway).