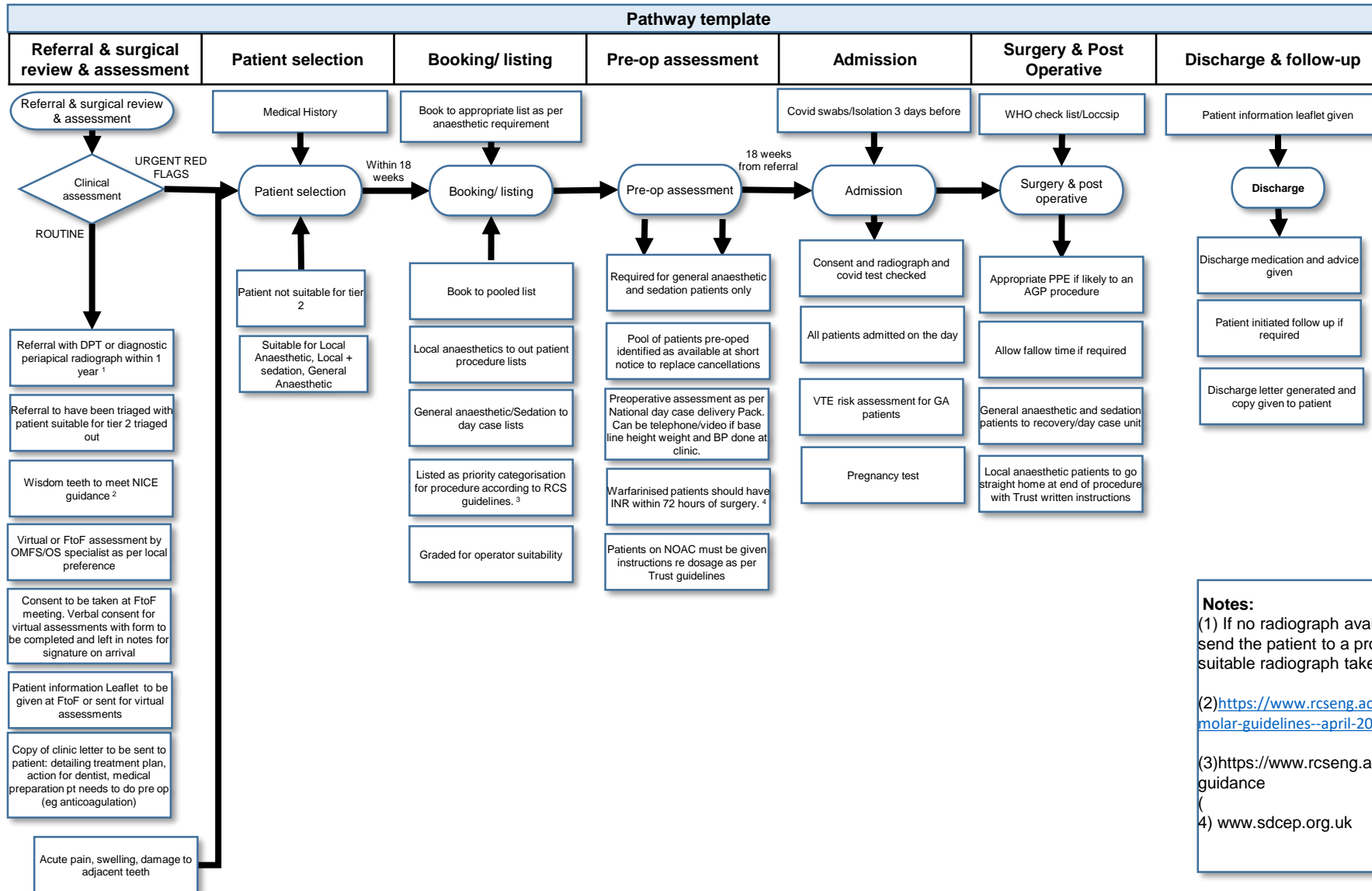


Review date: April 2022

# Removal of Wisdom Teeth, Impacted Teeth and Buried Tooth Roots Adult Pathway



**Notes:**

(1) If no radiograph available arrangements should be made to send the patient to a provider of radiology services to have a suitable radiograph taken to be available at consultation

(2) <https://www.rcseng.ac.uk/-/media/files/rcs/fds/guidelines/3rd-molar-guidelines--april-2021.pdf>

(3) <https://www.rcseng.ac.uk/coronavirus/surgical-prioritisation-guidance>

(4) [www.sdcep.org.uk](http://www.sdcep.org.uk)