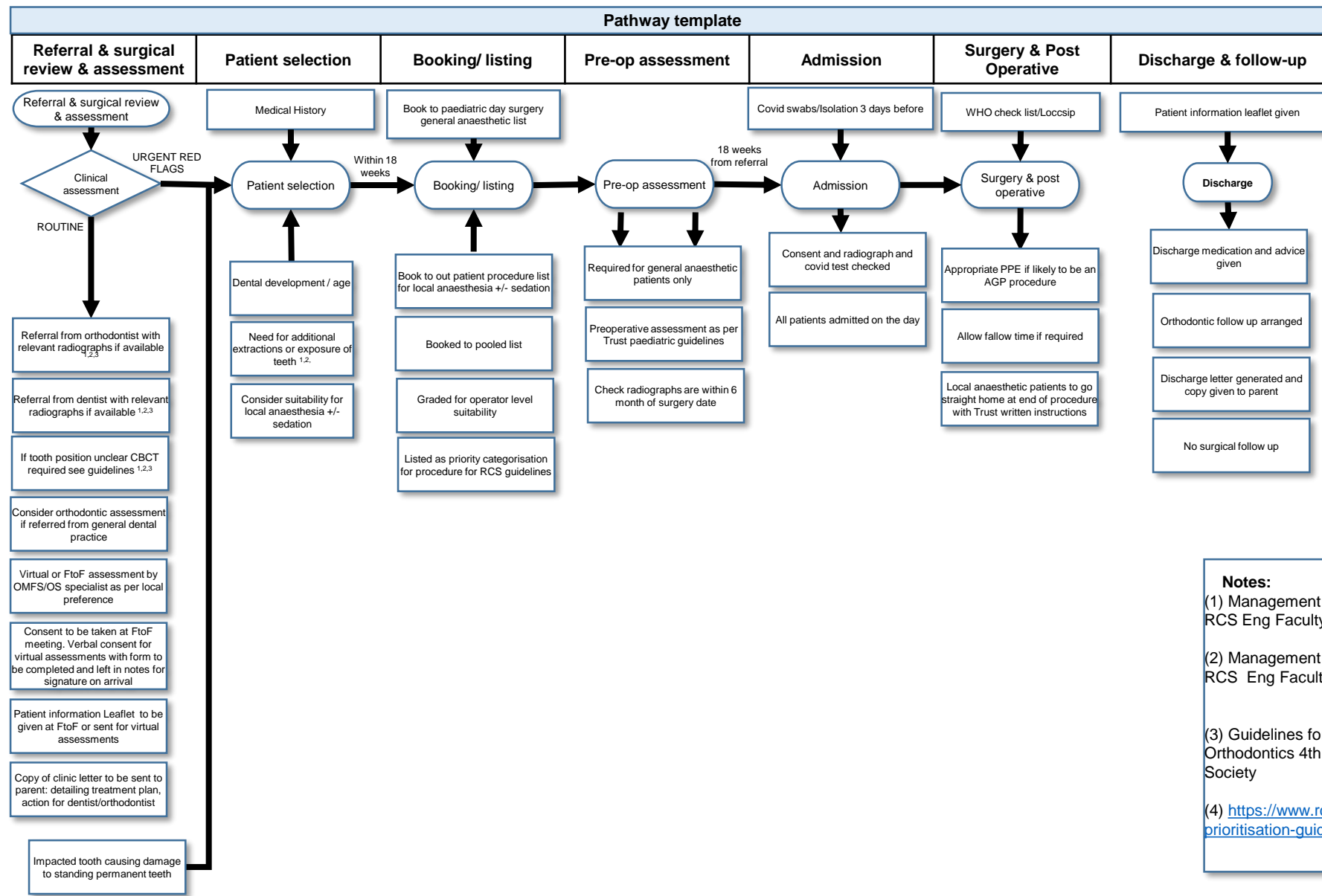


# Removal of Impacted Teeth in Children Pathway



**Notes:**

- (1) Management of the ectopic Maxillary canine  
RCS Eng Faculty of Dental Surgery 2016
- (2) Management of unerupted maxillary incisors  
RCS Eng Faculty of Dental Surgery 2016
- (3) Guidelines for the use of radiographs in Clinical Orthodontics 4th Ed 2015 British Orthodontic Society
- (4) <https://www.rcseng.ac.uk/coronavirus/surgical-prioritisation-guidance>