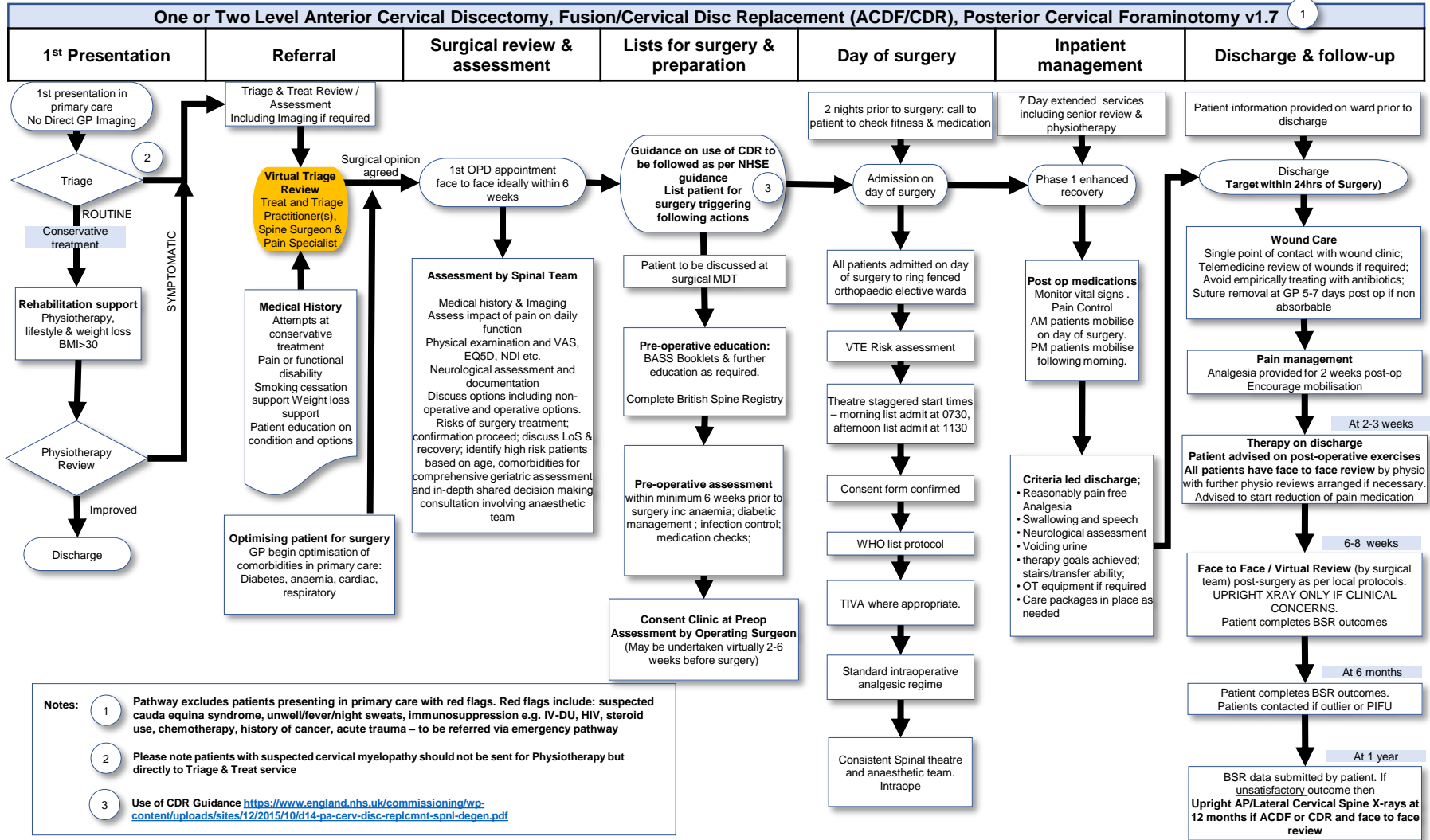


## Neck and Radicular Pain: 1 or 2 Level Anterior Cervical Discectomy & Fusion/Disc Replacement, Posterior Cervical Foraminotomy



**Notes:**

- 1 Pathway excludes patients presenting in primary care with red flags. Red flags include: suspected cauda equina syndrome, unwell/fever/night sweats, immunosuppression e.g. IV-DU, HIV, steroid use, chemotherapy, history of cancer, acute trauma – to be referred via emergency pathway
- 2 Please note patients with suspected cervical myelopathy should not be sent for Physiotherapy but directly to Triage & Treat service
- 3 Use of CDR Guidance <https://www.england.nhs.uk/commissioning/wp-content/uploads/sites/12/2015/10/d14-pa-cerv-disc-replcmnt-spnl-degen.pdf>

Shared decision making should occur at each stage of pathway